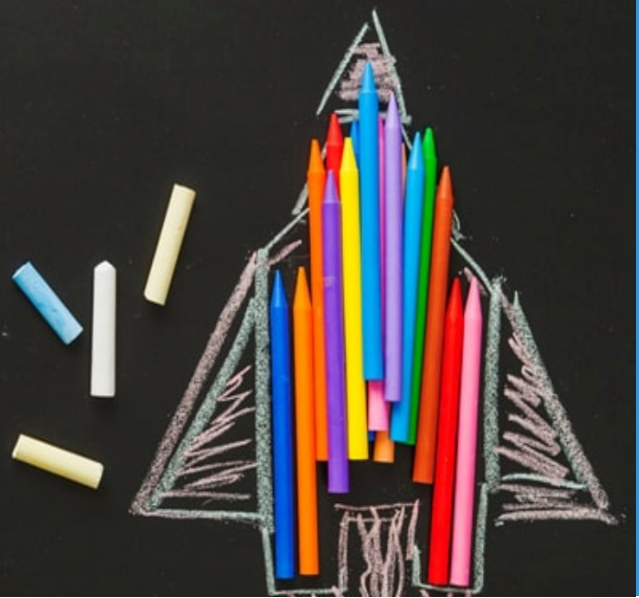




NEWSLETTER 3

BRUSSELS & TRAINING

Social Entrepreneurs.



3rd PROJECT MEETING IN BRUSSELS, BELGIUM

On 26 October 2018 all partners in the BASET project gathered for the 3rd project meeting in Brussels, Belgium after the organised 5-days' Training & Review on the Social Entrepreneurship Model + Train the Trainers Toolkit. The project coordinator Knowledge, Innovation and Strategies Management Club (KISMC) and the project partners CEED Bulgaria, IDEC, Caban Capital and Creative District gathered to discuss the current status and results from the intellectual outputs so far as well as next steps for implementing the project BASET: Boost Aid for Social Entrepreneurship through Training.

The timing of the project meeting was very good, i.e. after the 1st project training, since all the feedback collected could be discussed and reviewed for taking on board the updating of the drafts of the 2 intellectual outputs: SEDM & TTT... [Read more](#)

TRAINING & REVIEW IN BRUSSELS

On the 22-26 October 2018 all BASET partners - KISMC, CEED Bulgaria, IDEC, Caban Capital and Creative District, together with educators from Bulgaria, Greece, Belgium and the UK, took part in a 5-days training in Brussels under the project_BASET: Boost Aid for Social Entrepreneurship through Training, co-financed by the Erasmus+ Programme of the European Union. The training, which was organised and hosted by the BASET project partner - Creative District, aimed at delivering a brief overview of the project, its target groups, main objectives and results so far, and more specifically the two already produced draft intellectual outputs: SEDM & TTT... [Read more](#)



Business Modelling in Social Entrepreneurship



As we have realized and already shared in the blog article ['Why Social Business Modelling is Important for Social Entrepreneurship'](#) managing a social business is not about just adding business skills to the realm of social impact! Balancing a social mission with an intention to trade and manage a business requires a blending of skills which is greater than the sum of each set of skills alone.

The social impact inside a business operation is not cost neutral - so both the skills needed to deliver on a social impact and the costs involved in doing so need to be considered in designing a viable and sustainable business model. Therefore, business modelling is crucial for social entrepreneurs and for that reason, we are clarifying a few important points regarding business modelling in social entrepreneurship...

[Read more](#)

BUSINESS MODEL CANVAS FOR SOCIAL ENTREPRENEURS

The Business Model Canvas (BMC) was developed by Alex Osterwalder and Yves Pigneur, and co-created with an array of 470 practitioners from around the world. It offers a simple, visual, one-page canvas on which entrepreneurs can design, innovate and dialogue about their business models. It is not the only framework that has been developed to articulate business models but like many of the frameworks this one was built out of careful research. However, unlike many others, it has also been tested and enhanced through the input of many practitioners... [Read more](#)



Self-assessment of Educators in the BASET Project

[TAKE ASSESSMENT NOW](#)



RESOURCES FOR SOCIAL ENTREPRENEURS

Support on how social entrepreneurs should innovate, access business networks and finance, learn about the innovation life cycle through gamification and visualization, design business models and actively participate in the social entrepreneurship ecosystem.

Fast-track Test for Social Entrepreneurs

This is a short test with which you could answer one very personal question "Am I social entrepreneur". If you reply with YES to more than 50% of the questions, you would be very close to the profile of the social entrepreneur. The result is only demonstrative since many other factors and prerequisites could make your personal profile closer to the profile of one successful social entrepreneur.

Fast-track Test for Social Entrepreneurs

[TAKE TEST NOW](#)

BASET

**BOOST AID FOR SOCIAL
ENTREPRENEURSHIP
THROUGH TRAINING**

WWW.BASET.INFO